

## Furness General Hospital Emergency Department Monthly Bulletin: April 2010 to March 2011

This bulletin provides a breakdown of all injury attendances to Furness General Hospital Emergency Department (ED) between April 2010 and March 2011. Injury attendances peaked in July (n=822), with February (n=417) having the fewest.

There were more male (60%) injury attendances than female presenting at Furness General Hospital ED (**Figure 1**) and almost two fifths (39%) of injury attendances were aged 25 to 59, while 29% were aged 5 to 19 years (**Figure 2**).

Most injury attendances were recorded as other injury (59%), 19% were sports injury and 12% road traffic collisions (RTC) (**Table 1**).

**Table 2** shows the vast majority of injury attendances in the 0 to 4 (90%) and 60 plus (86%) age groups were recorded as other injury. Apart

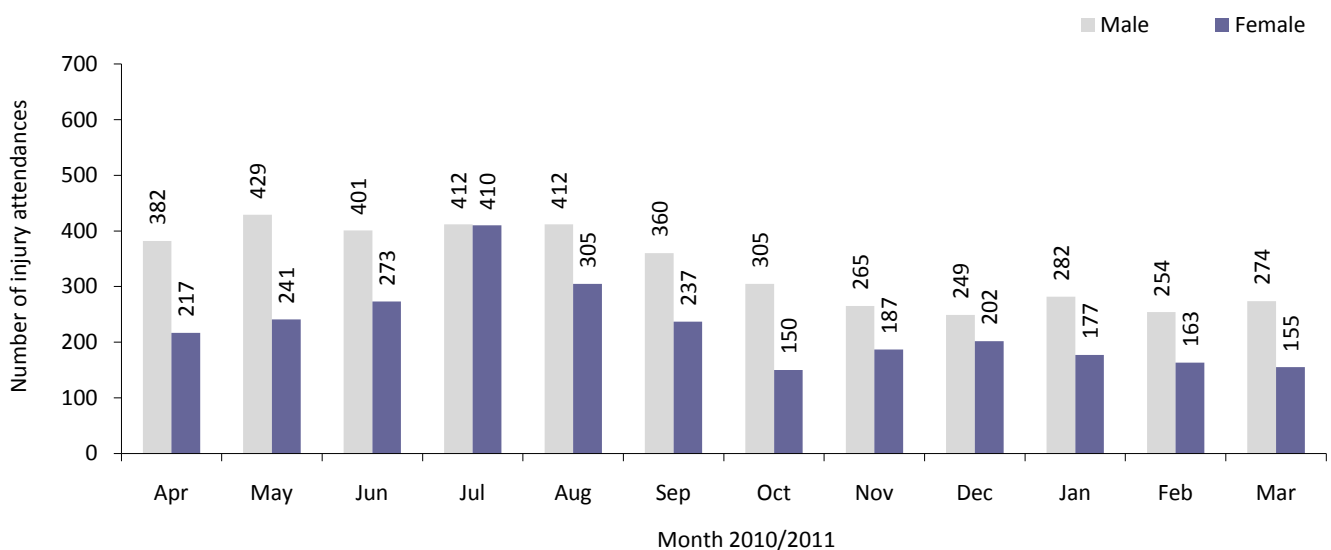
from other injury, sports injury was the most common injury group in people aged 5 to 19 (34%) and 20 to 24 (28%). In the 25 to 59 age group, RTC (16%) and sports injury (13%) were most frequent.

**Table 3** shows that the majority (83%) of injury attendees self-referred and 8% were referred by the emergency services. For all age groups, the emergency services were the second highest referral source. (**Table 4**).

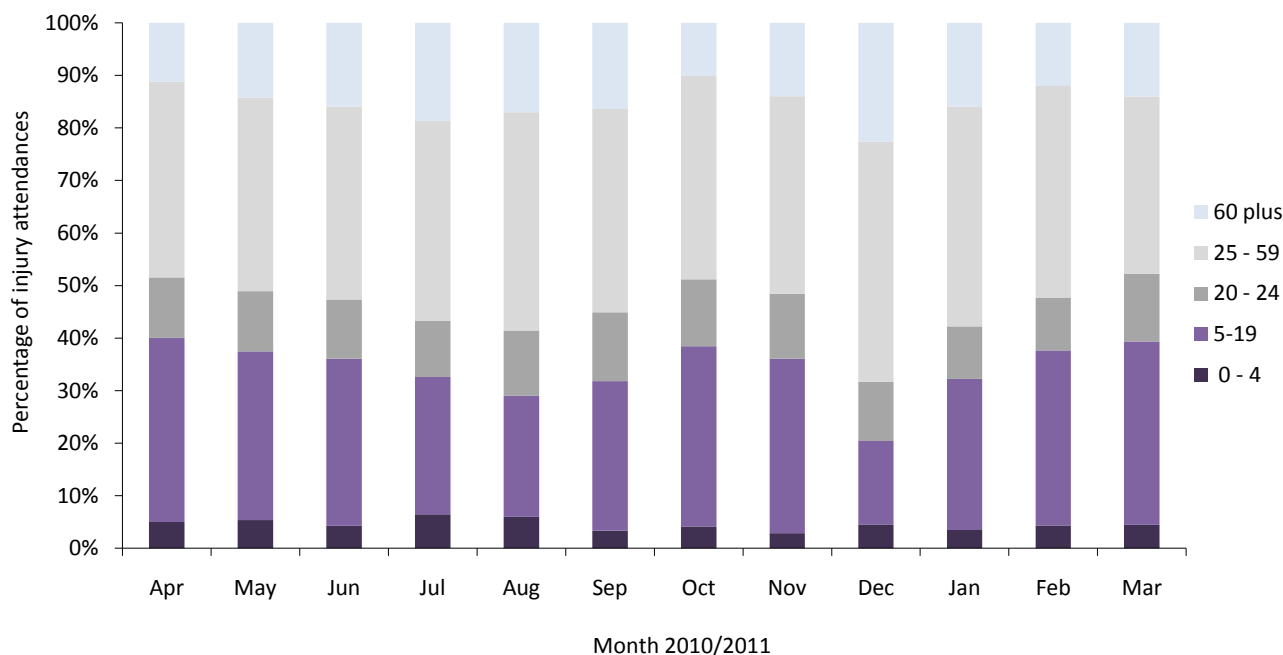
Over four in ten of all injury attendances occurred in the home (42%) and in a public place (41%) (**Table 5**).

Over four in ten (43%) of attendees were discharged requiring no follow-up treatment; 20% were discharged into the care of their GP (**Table 6**).

**Figure 1: Gender of injury attendances by month, April 2010 to March 2011**



**Figure 2: Age group of injury attendances by month, April 2010 to March 2011**



**Table 1: Injury attendances by injury group, April 2010 to March 2011<sup>1</sup>**

Injury group	Apr	May	Jun	Jul	Aug	Sep	Oct	Nov	Dec	Jan	Feb	Mar	Total	%
Other injury	315	397	461	627	513	344	178	209	320	237	198	178	3977	59
Sports injury	150	129	95	69	77	142	144	111	32	90	113	143	1295	19
RTC	75	73	71	71	82	70	58	80	59	70	52	46	807	12
Assault	36	49	20	24	30	20	40	30	19	34	35	32	369	5
Deliberate self-harm	23	22	27	31	15	21	35	22	21	28	19	30	294	4
<b>Total</b>	<b>599</b>	<b>670</b>	<b>674</b>	<b>822</b>	<b>717</b>	<b>597</b>	<b>455</b>	<b>452</b>	<b>451</b>	<b>459</b>	<b>417</b>	<b>429</b>	<b>6742</b>	<b>100</b>

**Table 2: Injury attendances by injury group and age group, April 2010 to March 2011**

Injury group	0 - 4		5 - 19		20 - 24		25 - 59		60 plus		Total
	N	%	N	%	N	%	N	%	N	%	
Assault	0	0	106	5	79	10	179	7	5	0	369
DSH	0	0	69	3	58	7	156	6	11	1	294
Other injury	284	90	959	48	322	41	1520	58	892	86	3977
RTC	21	7	181	9	105	13	417	16	83	8	807
Sports injury	11	3	673	34	221	28	345	13	45	4	1295
<b>Total</b>	<b>316</b>	<b>100</b>	<b>1988</b>	<b>100</b>	<b>785</b>	<b>100</b>	<b>2617</b>	<b>100</b>	<b>1036</b>	<b>100</b>	<b>6742</b>

**Table 3: Injury attendances by source of referral, April 2010 to March 2011<sup>23</sup>**

Source of referral	Apr	May	Jun	Jul	Aug	Sep	Oct	Nov	Dec	Jan	Feb	Mar	Total	%
Self-referral	522	598	551	636	562	489	363	388	357	405	361	378	5610	83
Emergency services	30	25	69	123	91	56	26	21	59	24	17	20	561	8
Other	21	23	17	24	25	18	30	10	16	11	12	7	214	3
GP	7	7	19	24	30	14	6	9	10	8	***	***	143	2
Police	***	9	8	11	6	7	10	14	5	7	9	***	93	1
Educational establishment	11	5	8	***	***	7	20	6	***	***	10	15	88	1
Work	5	***	***	***	***	6	***	***	***	***	***	***	32	0
GDP	***	***	***	***	***	***	***	***	***	***	***	***	***	0
Health care provider: same or other	***	***	***	***	***	***	***	***	***	***	***	***	***	0
<b>Total</b>	<b>599</b>	<b>670</b>	<b>674</b>	<b>822</b>	<b>717</b>	<b>597</b>	<b>455</b>	<b>452</b>	<b>451</b>	<b>459</b>	<b>417</b>	<b>429</b>	<b>6742</b>	<b>100</b>

**Table 4: Injury attendances by source of referral and age group, April 2010 to March 2011**

Source of referral	0 - 4		5 - 19		20 - 24		25 - 59		60 plus		Total
	N	%	N	%	N	%	N	%	N	%	
Educational establishment	0	0	87	4	***	0	***	0	***	0	88
Emergency services	19	6	88	4	41	5	180	7	233	22	561
GP	***	0	23	1	***	2	65	2	39	4	143
Health care provider: same or other	0	0	***	0	***	0	***	0	***	0	***
Other	7	2	53	3	32	4	82	3	40	4	214
Police	***	0	24	1	18	2	50	2	***	0	93
Self referral	289	91	1707	86	671	85	2222	85	721	70	5610
Work	***	0	***	0	8	1	17	1	***	0	***
<b>Total</b>	<b>316</b>	<b>100</b>	<b>1988</b>	<b>100</b>	<b>785</b>	<b>100</b>	<b>2617</b>	<b>100</b>	<b>1036</b>	<b>100</b>	<b>6742</b>

**Table 5: Injury attendances by location of incident, April 2010 to March 2011**

Location	Apr	May	Jun	Jul	Aug	Sep	Oct	Nov	Dec	Jan	Feb	Mar	Total	%
Home	197	245	311	487	419	257	135	133	204	183	140	125	2836	42
Public place	296	299	264	234	230	227	226	222	207	195	175	178	2753	41
Other	40	57	42	43	44	57	39	40	12	51	42	44	511	8
Educational establishment	31	41	35	14	***	28	38	38	***	15	33	51	338	5
Work	35	28	22	44	***	28	17	19	***	15	27	31	304	5
<b>Total</b>	<b>599</b>	<b>670</b>	<b>674</b>	<b>822</b>	<b>717</b>	<b>597</b>	<b>455</b>	<b>452</b>	<b>451</b>	<b>459</b>	<b>417</b>	<b>429</b>	<b>6742</b>	<b>100</b>

**Table 6: Disposal method of all injury attendances, April 2010 to March 2011**

Disposal	Apr	May	Jun	Jul	Aug	Sep	Oct	Nov	Dec	Jan	Feb	Mar	Total	%
Discharged - did not require follow-up treatment	305	335	300	334	248	242	203	188	160	192	209	212	2928	43
Discharge - follow up care by GP	95	109	125	187	197	159	97	101	73	73	63	71	1350	20
Admit to hospital bed	45	48	63	135	115	55	38	39	92	73	38	34	775	11
Referred to fracture clinic	64	76	75	59	71	74	58	50	50	41	50	54	722	11
Referred to ED clinic	38	27	44	29	20	21	24	24	36	23	19	24	329	5
Referred to out-patient clinic	15	26	19	26	24	19	12	25	6	16	13	12	213	3
Left - before being treated	14	22	29	21	14	13	***	11	17	24	11	***	189	3
Refer to other health care provider	13	18	8	19	12	7	7	***	7	6	***	***	107	2
Transfer to other health care provider	***	7	***	***	10	***	8	***	***	***	5	***	58	1
Other	6	***	***	7	5	***	***	***	5	***	5	***	45	1
Left - refused treatment	***	***	***	***	***	***	***	5	***	***	***	***	22	0
Not specified	***	***	***	***	***	***	***	***	***	***	***	***	***	0
Patient died in department	***	***	***	***	***	***	***	***	***	***	***	***	***	0
Restore to ward	***	***	***	***	***	***	***	***	***	***	***	***	***	0
<b>Total</b>	<b>599</b>	<b>670</b>	<b>674</b>	<b>822</b>	<b>717</b>	<b>597</b>	<b>455</b>	<b>452</b>	<b>451</b>	<b>459</b>	<b>417</b>	<b>429</b>	<b>6742</b>	<b>100</b>

Published June 2011

Johnathan Rooney (TIIG Officer)

Centre for Public Health, Liverpool John Moores University, 2nd Floor, Henry Cotton Building, Liverpool, L3 2ET

Tel: 0151 231 4513 Email: [j.rooney@ljmu.ac.uk](mailto:j.rooney@ljmu.ac.uk)

Website: [www.tiig.info](http://www.tiig.info) (please note data requests should be made through the website)

<sup>1</sup> Please note percentages might not add to one hundred due to rounding.

<sup>2</sup> GP=General practitioner, GDP=General dental practitioner.

<sup>3</sup> Please note that all numbers less than five have been suppressed in line with patient confidentiality and if there is only one number is less than five in a category then two numbers will be suppressed at the next level (e.g. <6) in order to prevent back calculations from totals.